



Arch Aluminum & Glass Co., Inc.
Your True Single Source®



3100 & L3100 IMPACT WALL



The 3100 & L3100 Impact Framing System manufactured by Arch Aluminum and Glass has been designed & tested to meet the current Miami-Dade Impact Code and the Florida Building Code.

The 3100/L3100 Impact Wall System is a completely tested System, consisting of Laminated Glass, Aluminum Framing, Silicone, Gasket and Anchors. This System includes a 1-1/4" x 4-1/2" aluminum frame member with 3/4" fin at the outside face, removable glass stops for interior glazing, shear block joint construction, and 9/16" Laminated or 1-5/16" Insulated Laminated Glass using .090 or .100 PVB interlayers. When installing or designing your next project, check our Product Approvals for the correct module size and design pressure required to meet the codes in your area. The system is available in Clear & Dark Bronze Anodized, Environmentally friendly Archkote Powder Coating and custom finishes.

3100 & L3100 IMPACT WALL

Air: ASTM E283: air shall not exceed .06 CFM when tested at 6.24 PSF.

Water: ASTM E547/E331: no uncontrolled Water when tested at 15.00 PSF

Structure: ASTM E330: Maximum deflection of L/175 with a safety factor of 1.65.

Tested Per: TAS 201, TAS 202, TAS 203

Product Approvals

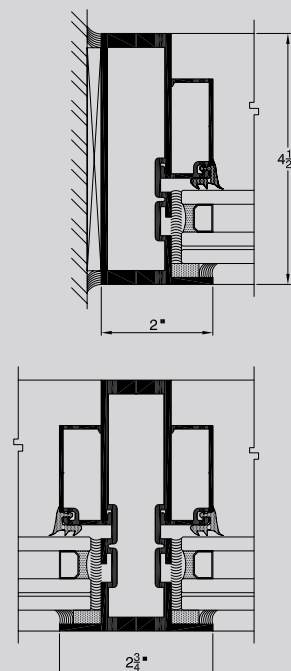
Miami-Dade County 05-0906.04 FBC 6297.1

Details & Approval Information:

Complete system details are available on the Arch Product CD or check our websites.

02/08

VERTICAL SECTIONS



HORIZONTAL SECTIONS

